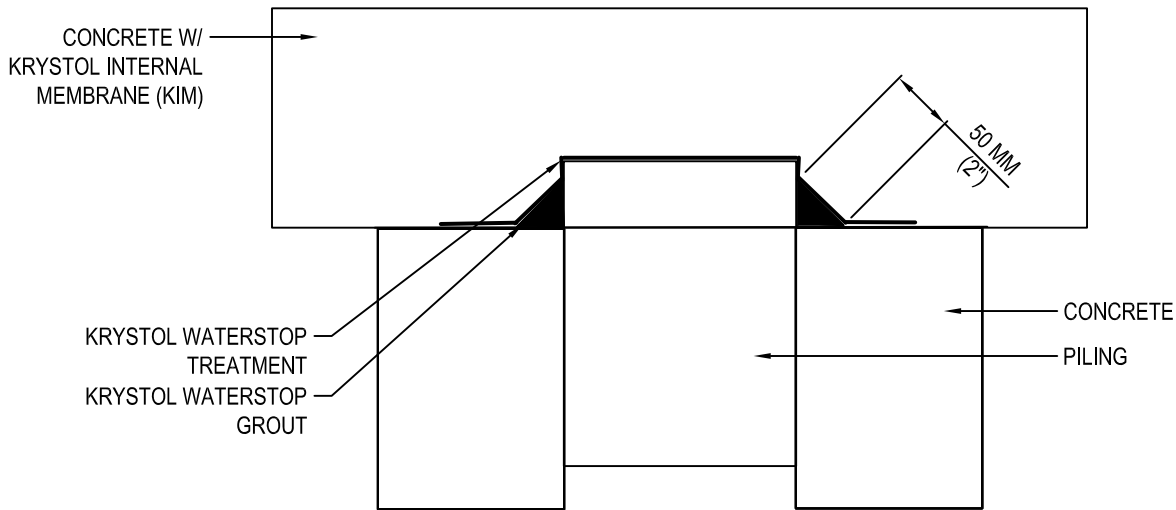




KRYTON INTERNATIONAL INC.  
1645 EAST KENT AVE.  
VANCOUVER, BC V5P 2S8  
TOLL FREE: 1-800-267-8280  
PHONE: (604) 324-8280  
FAX: (604) 324-8899  
www.kryton.com



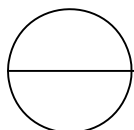
PILE CAP  
DOUBLE PROTECTION

MANUFACTURER'S NOTES:

1. PLACE KRYSTOL WATERSTOP GROUT IN A 50 MM (2 IN.) WIDE FILLET
2. COAT SURFACE AREA OF THE CURED KRYSTOL WATERSTOP GROUT FILLET, AND SURROUNDING CONCRETE WITH KRYSTOL WATERSTOP TREATMENT AT ASPREAD RATE OF 1 KG/M<sup>2</sup> (0.2 LB./SQ. FT.).
3. ADD KRYSTOL INTERNAL MEMBRANE (KIM) TO READY MIX CONCRETE A RATE OF 2% BY WEIGHT OF CEMENTITIOUS MATERIALS (INCLUDING FLY ASH AND OTHER SUPPLEMENTARY CEMENTING MATERIALS) TO A MAXIMUM DOSAGE OF 8 KG/M<sup>3</sup> (13.5 LB./CU. YD.)

NOTES:

1. INSTALLATION TO BE COMPLETED IN ACCORDANCE WITH MANUFACTURER'S SPECIFICATIONS.
2. DO NOT SCALE DRAWING.
3. THIS DRAWING IS INTENDED FOR USE BY ARCHITECTS, ENGINEERS, CONTRACTORS, CONSULTANTS AND DESIGN PROFESSIONALS FOR PLANNING PURPOSES ONLY. THIS DRAWING MAY NOT BE USED FOR CONSTRUCTION.
4. ALL INFORMATION CONTAINED HEREIN WAS CURRENT AT THE TIME OF DEVELOPMENT BUT MUST BE REVIEWED AND APPROVED BY THE PRODUCT MANUFACTURER TO BE CONSIDERED ACCURATE.
5. CONTRACTOR'S NOTE: FOR PRODUCT AND COMPANY INFORMATION VISIT [www.CADdetails.com/info](http://www.CADdetails.com/info) AND ENTER REFERENCE NUMBER 5104-050



PENETRATIONS

PILE CAP - DOUBLE PROTECTION